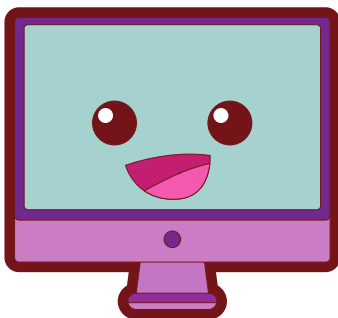


## Support your community by volunteering with BANC

### Blackheath Cares

Everyone needs a helping hand now and then – especially during illness, injury or hospitalisation. That is when Blackheath Cares steps in. You might be looking after a pet, doing the occasional gardening or cleaning task, taking someone to appointments or the shops or simply checking in to say hi. Drivers with cars that will accommodate someone with limited mobility and people to do occasional small cleaning jobs are especially needed

Email [projects@banc.org.au](mailto:projects@banc.org.au)



### Data entry

We're compiling a local contact hub so we can easily let community members about BANC's many creative, educational and social support offerings. You will be entering information into a fairly simple database. Choose your own hours and work from our office or from home. Data entry experience would be great.

Email [nccoordinator@banc.org.au](mailto:nccoordinator@banc.org.au)

### HUFF Facilitators

Huff (Heads Up for Fire and other emergencies) Facilitators act as the point person for their neighbourhood in preparing for bushfires and other natural disasters. You will receive regular training, materials and support from BANC's HUFF co-ordinator and the RFS and join a network of 70-plus facilitators spread throughout the Upper Blue Mountains.

More info: [www.banc.org/HUFF](http://www.banc.org/HUFF) or email [HUFF@banc.org.au](mailto:HUFF@banc.org.au)



### Cliff View Farm

Situated on the Shipley Plateau, this community farm produces heaps of fresh fruits and vegetables every year for its own volunteers and for needy community members'. Get your hands in the soil and feel the joy of making things grow. You can take part in regular workshops on topics such as soil health and sustainable gardening as well. Contact [Lyndall2013@gmail.com](mailto:Lyndall2013@gmail.com)

**No email? Just call us on 4787 7770**